

FOR SAFER CARS

# EURO NCAP

[www.euroncap.com](http://www.euroncap.com)



LE GOUVERNEMENT  
DU GRAND-DUCHÉ DE LUXEMBOURG  
Ministère du Développement durable  
et des Infrastructures



Generalitat de Catalunya  
Government of Catalonia



# Speed Assistance Systems

*Are vehicle makers fitting them?*

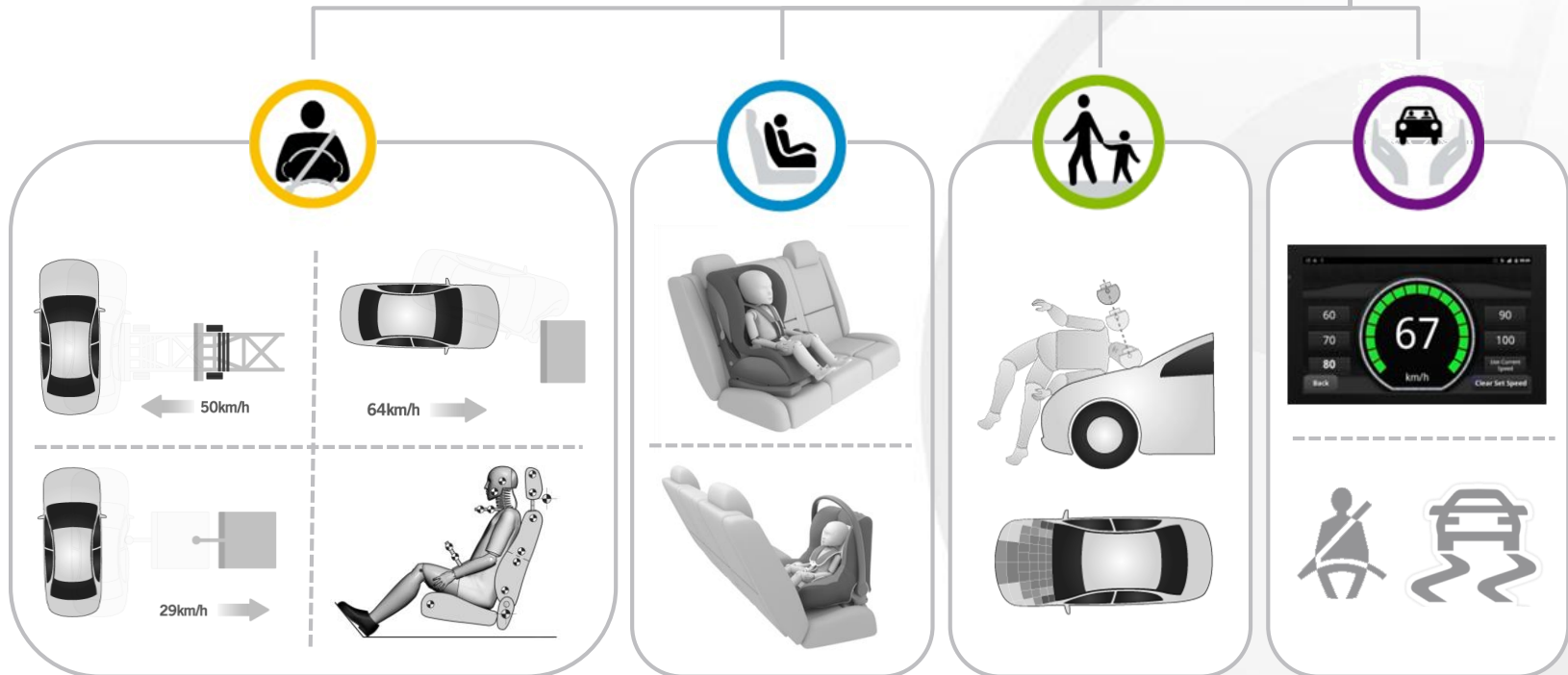
Marie Brasseur

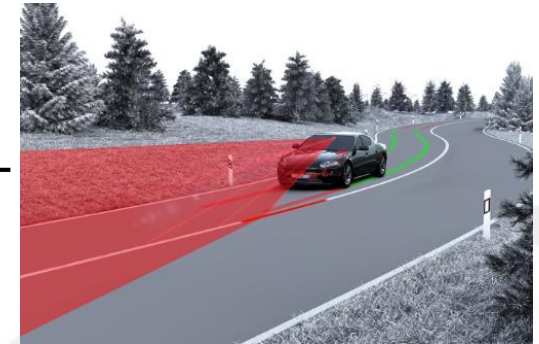
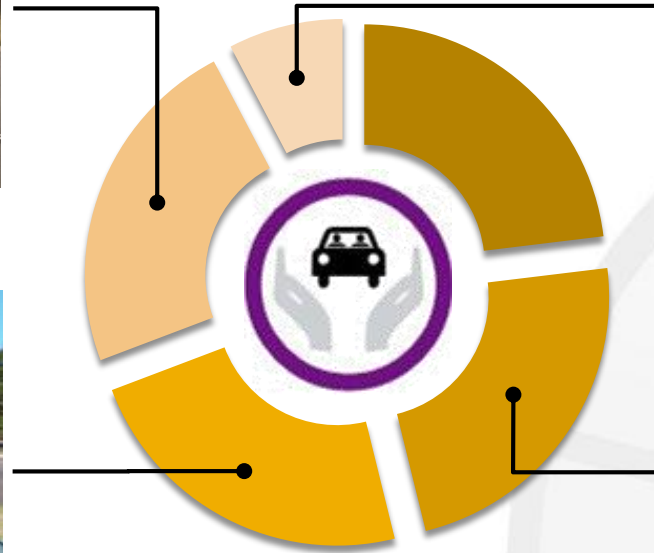
ETSC Dinner Debate – Fitting Safety as Standard

Members' Salon, European Parliament, 3 November 2014



- Encouraging wider fitment, better functionality and greater performance





- SBR
- SLD/SAS
- LDW/LKA

- ESC
- AEB Interurban



# Speed Assistance put to the test

## SLIF

Functionality check on different types of roads - OEM reports on accuracy & coverage

## ISA

Ensure that the speed limits from the SLIF can be taken over by the MSA

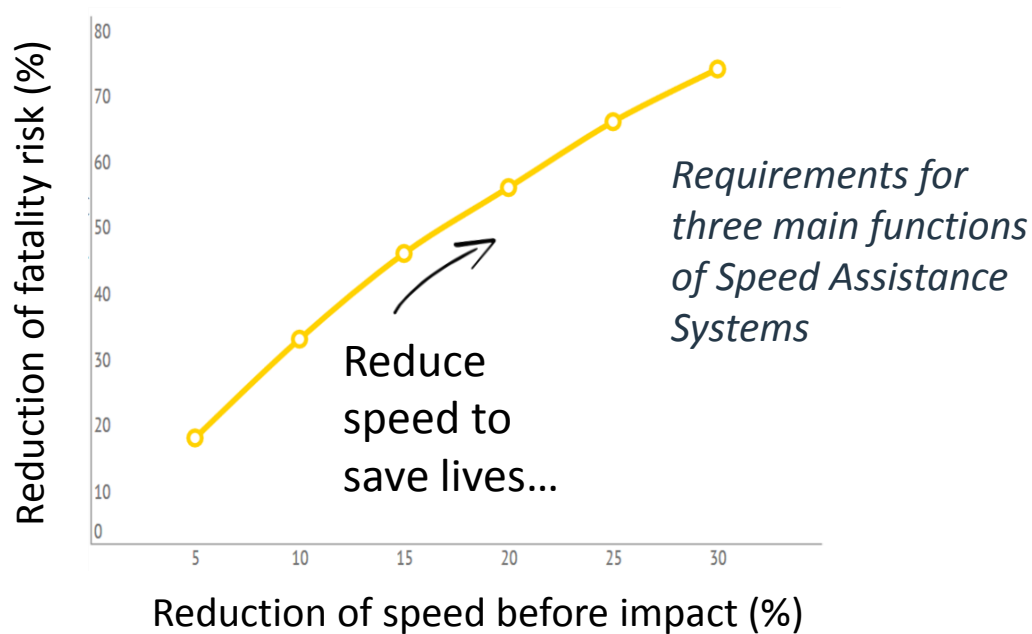
## MSA

Exceeding set speed at 50, 80 and 120 km/h - check warning and limitation function



## ■ Providing driver assistance

*The reduction of fatality risk (%) in relation to reduced speed*



Speed Limit Information Function (SLIF)



Manual Set Speed Assist Function (MSA)

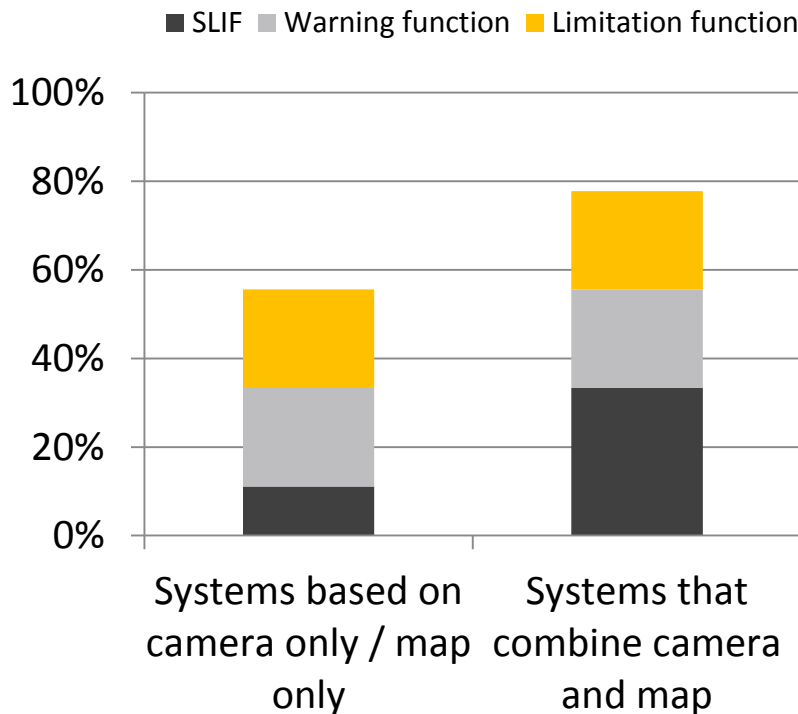


Intelligent Speed Assist Function (ISA)

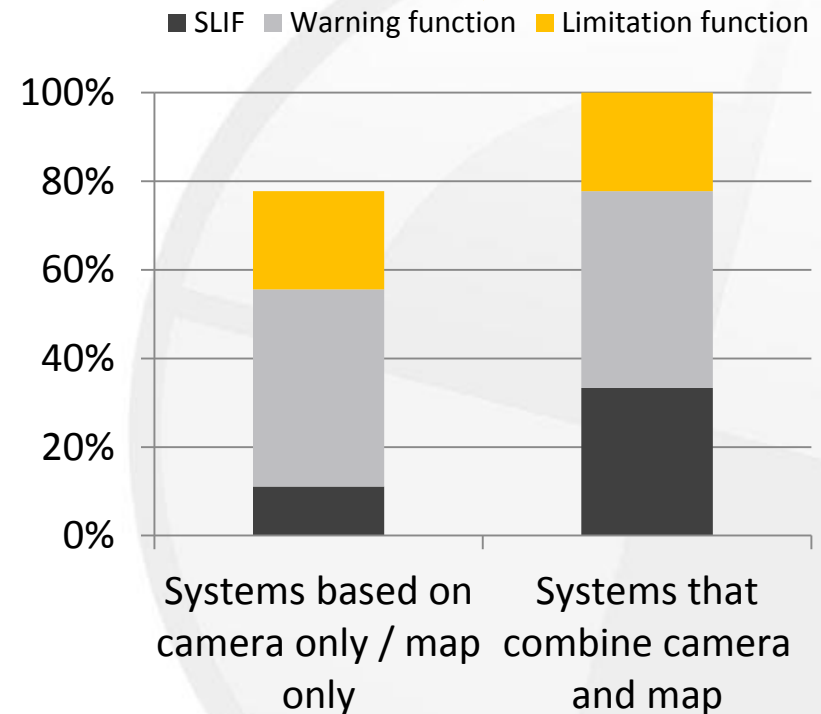


## Promoting best practice...

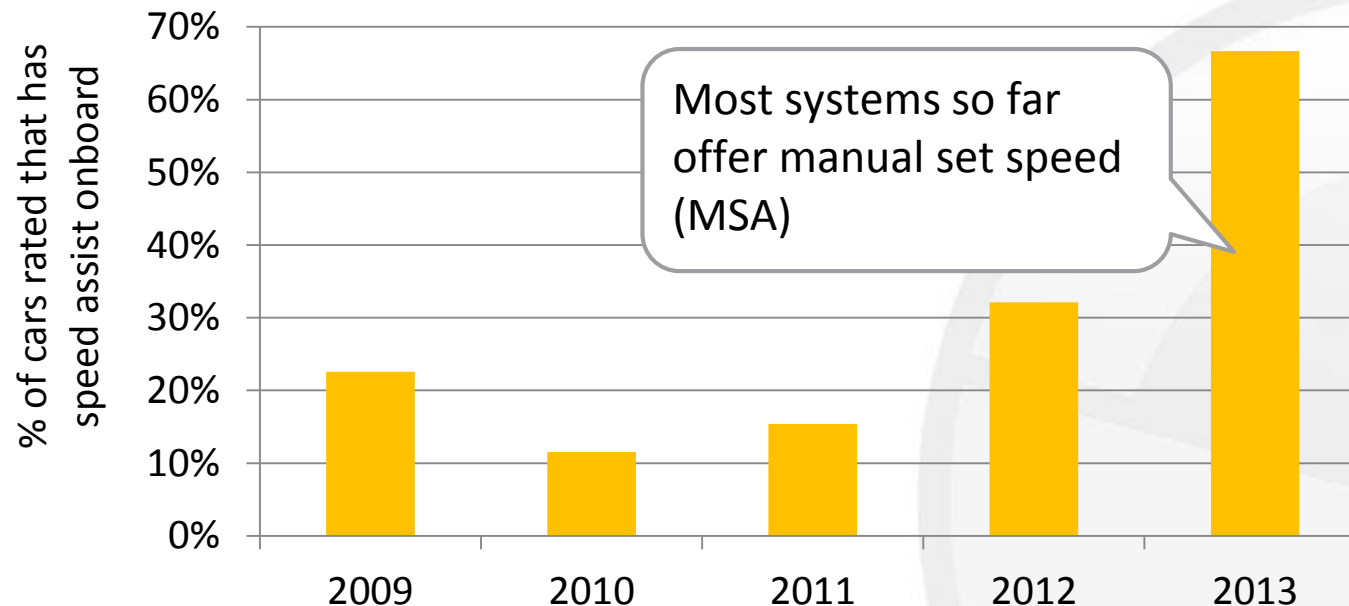
Systems that offer speed limit info and/or independent setting of the travel speed



Systems that offer speed limit info and offer driver confirmed setting of the speed



## ■ Installation rates in Euro NCAP tested vehicles\*



\* System must be offered on 50% or more volume sales across EU-28 to be recognised by Euro NCAP (increasing to 100% in 2016)





## Domain 1

- Front occupant protection
- Far side occupant protection
- SBR update



## Domain 2

- AEB C2C Phase 2
- AEB Cyclists



## Domain 3

- LKA
- Road departure and evasive steering



## Domain 4

- SAS
- Driver monitoring
- Semi-automated driving

Ratings – Rewards – Tests Campaigns – Consultation

- Euro NCAP will update requirements in 2016 for future systems
  - More stringent on map coverage data
  - Add recognition of sub-signs for camera based SLIF (that read conditional signs)
  - More accurate Speedometer
  - ...

- ISA promoted through Euro NCAP rating since 2009
- There is a steadily increase in installations on vehicles
- Most popular systems still offer simple driver set warning and/or limitation (MSA)
  - Some SLIF based on camera but not yet fully integrated
- There is room for improvement in terms of performance – map quality is crucial

# Copyright statement

- This work is the intellectual property of Euro NCAP. Permission is granted for this material to be shared for non-commercial, educational purposes, provided that this copyright statement appears on the reproduced materials and notice is given that the copying is by permission of Euro NCAP. To disseminate otherwise or to republish requires written **permission from Euro NCAP**.
- No rights can be derived from the contents of this presentation.