



**INEM**

**NATIONAL INSTITUTE OF  
MEDICAL EMERGENCY**

[rui.campos@inem.pt](mailto:rui.campos@inem.pt)

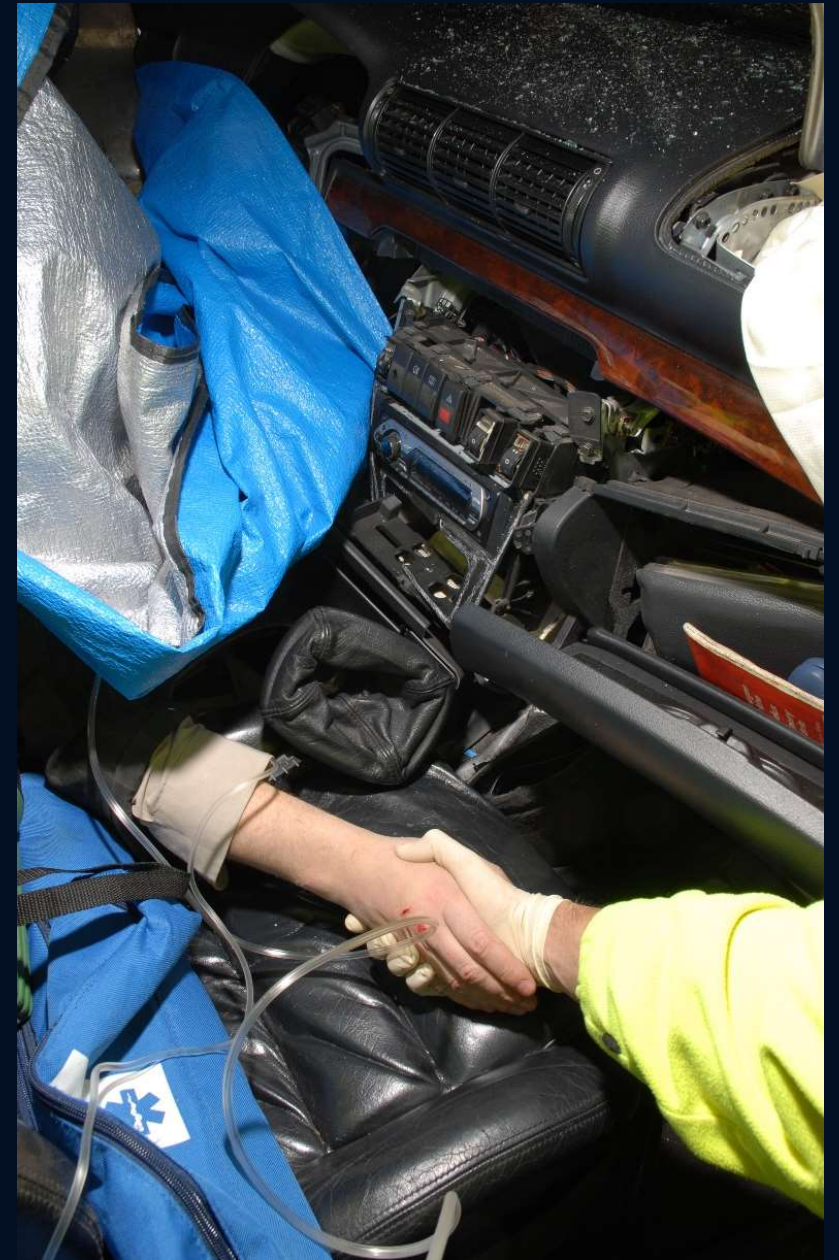
## MISSION INEM



The National Institute of Medical Emergency (INEM) is the **Ministry of Health** organization responsible for the **coordination** of the Integrated Medical Emergency System in mainland Portugal, providing pre-hospital emergency care to trauma victims and acute medical patients.

INEM's main activity consists of on-the-scene emergency care, assisted transport of victims to an appropriate hospital and coordination between different hospitals and other facilities.

- INEM Organic Law - Decree-Law: 34/2012 February 14 -





# INTEGRATED SYSTEM OF MEDICAL EMERGENCY SIEM



Set of coordinated actions of the various components of the national health system to enable fast, efficient and cost-effective action in emergency medical situations, from on-site relief to assisted transportation of victims to the adequate health care unit.



# SKILLS INEM

....



**MEDICAL EMERGENCY COORDINATION**



**PRE HOSPITAL NATIONAL SYSTEM**



**MEDICAL EMERGENCY EDUCATION**



**SPECIAL UNIT**



**EMERGENCY TRANSPORT**



# EUROPEAN EMERGENCY NUMBER 112



The 112 is the european emergency number for all kind of emergencies (medical, fire, safety, ...). It's free and works on any telephone equipment, even if there is no network coverage and even blocked by PIN!

POLICE

FIREFIGHTERS

GNR

INEM

RED CROSS





# URGENT PATIENTS COORDINATION CENTER **CODU**



The CODU INEM ensure 24h/day the area of medical emergency line 112, through pre-hospital emergency medical technicians specially trained.

## **IT IS CODU RESPONSABILITY :**

- The medical **TRIAGE** and evaluation of emergency calls
- To **DISPATCH** adequate response
- The **MONITORING** of medical emergency teams on the ground
- The **CONTACT** with health facilities



# URGENT PATIENTS COORDINATION CENTER **CODU**

....



## **ATTENDANCE:**

Call National Center

## **TRIAGE AND COUNSELING:**

Integrated system to support triage and care advising - TetriCoSy®

## **DRIVE MEANS:**

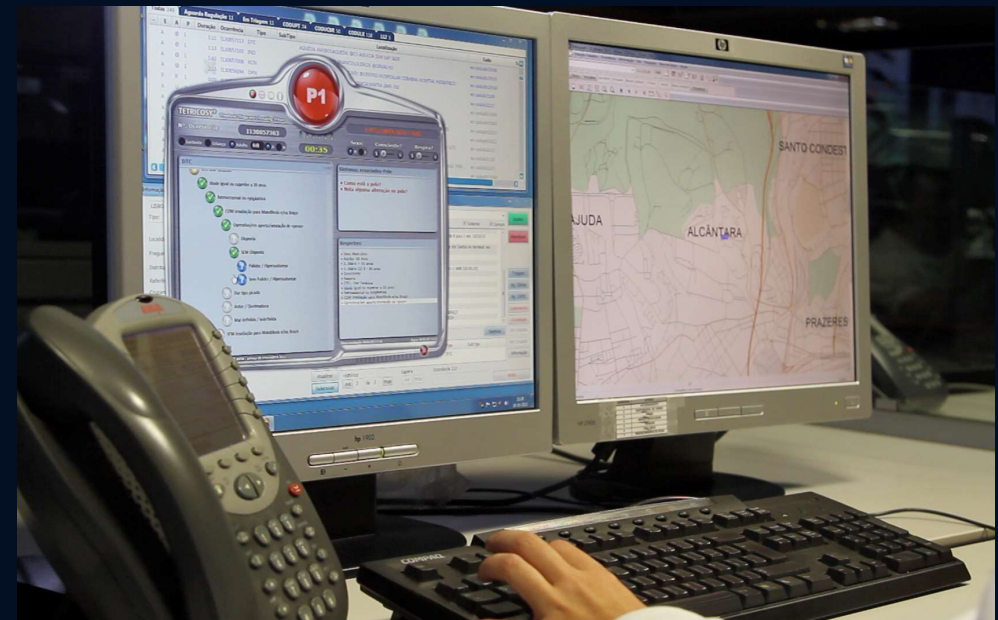
Georeferencing and choice of units depending on the distance / time

## **COMMUNICATION ON LINE:**

Telemedicine and Icare®

## **PREPARING HOSPITAL RECEPTION:**

Communication Voice / Data; Data base; Tasks "on-line"



# URGENT PATIENTS COORDINATION SEA CENTER CODU-MAR

....

## CRAFT

- Portuguese (all around the world)
- In territorial waters
  - medical advice
  - evacuation





# NATIONAL POISONS INFORMATION CENTER DRA. ARLINDA BORGES CIAV



## DIAGNOSIS

- toxicity
- therapy
- prognosis

808 250 143



# INTER-HOSPITAL PEDIATRIC TRANSPORT

## TIP



4 AMBULANCES

## CHILDREN, NEWBORNS AT RISK AND PREMATURE

Stabilization and transport to  
appropriate hospitals to treatment



# PSYCHOLOGICAL EMERGENCY INTERVENTION MOBILE UNIT

**UMIPE**

....

## **SPECIAL SITUATIONS**

differentiated service  
intervention remotely or on site





# MEDICAL EMERGENCY MOTORCYCLE MEM



8 MOTORCYCLES

## QUICK STABILIZATION

Quick arrival at the site and  
victim's stabilization until the  
arrival of ambulance



# MEDICAL EMERGENCY STATIONS

**PEM**

....

312 AMBULANCE

## STABILIZATION AND TRANSPORT

Patients in need of assistance  
during transport

Automatic External Defibrillation





# EMERGENCY MEDICAL AMBULANCE

**AEM**

....

56 AMBULANCE

## STABILIZATION AND TRANSPORT

Patients in need of assistance during transport

Automatic External Defibrillation

Therapeutic application protocols





# IMMEDIATE LIFE SUPPORT AMBULANCE

**SIV**



39 AMBULANCES

## STABILIZATION AND TRANSPORT

Patients in need of assistance during transport

Defibrillator with ECG monitor connected with the CODU

Therapeutic application protocols



# MEDICAL EMERGENCY AND RESUSCITATION CAR **VMER**



44 VMER

## **ADVANCED LIFE SUPPORT**

Medical team on the site to  
stabilization and care during  
transport to hospital in ambulance



# EMERGENCY MEDICAL HELICOPTER SERVICE

**SHEM**



4 HELICOPTERS

## ADVANCED LIFE SUPPORT

Transport of a medical team to the site  
to stabilization and patient transport to  
the hospital or between health units





# SPECIAL INTERVENTION SITUATIONS



MAJOR INCIDENT



MASS CASUALTY INCIDENT



NATURAL OR TECHNOLOGICAL CATASTROPHE  
(DISASTER)



TERRORIST THREAT



INTERNATIONAL COOPERATION MISSION



IMPLEMENTATION OF RETURN PLAN

## SPECIAL INTERVENTION UNIT



- ADVANCED MEDICAL POST/ EMERGENCY MEDICAL TEAM TYPE 1 (MOBILE)
- PERSONAL PROTECTIVE EQUIPMENT
- EMERGENCY COMMUNICATIONS KIT
- LOGISTIC MEDICAL SUPPORT

# SPECIAL INTERVENTION UNIT



VIC (1)



VIC (1)



VIC (1)



VIC (1)



Atrelado (1)



Atrelado (1)



Atrelado (1)







[www.inem.pt](http://www.inem.pt) | [inem@inem.pt](mailto:inem@inem.pt)

follow us



# NATIONAL INSTITUTE OF MEDICAL EMERGENCY

## HEADQUARTERS

### NATIONAL INSTITUTE OF MEDICAL EMERGENCY

Rua Almirante Barroso, 36  
1000-013 Lisboa  
Phone: 213 508 100 | Fax: 213 508 180

## OTHER SERVICES

### NORTHERN REGIONAL OFFICE

Rua Dr. Alfredo Magalhães, 62 - 5th Floor  
4000-063 Oporto  
Phone: 222 065 000 | Fax: 222 065 010

### REGIONAL CENTER DELEGATION

Eiras road, 259 - 2nd Floor  
3020-199 Coimbra  
Phone: 239 797 800 | Fax: 239 797 825

### SOUTH REGIONAL DELEGATION

Rua Almirante Barroso, 36 - 6th Floor  
1000-013 Lisboa  
Phone: 213 508 161 | Fax: 213 508 144  
MARF - Guilhim Site, A1 Building - PO Box 30M - Estói  
8009-021 Faro  
Phone: 213 508 157 | Fax: 289 870 481