

**EBOLK**  
TRANSPORT



GOODMORNING

PARTICIPANTS ETSC'S "SAFE AND SOBER TALK"

20th of november 2018

# SUBJECTS

- Introduction Marco Koopman
- Introduction Bolk Transport
- Safe and sober
- Our experiences



# INTRODUCTION MARCO KOOPMAN

- Working at Bolk since 2001
- Been driver and transportplanner, quality manager
- “Self-employed without employees” since 2016 for two days at Bolk.
- Working areas:
  - Give “Het Nieuwe Rijden” (the new way of driving) course
  - Introducing new Bolk drivers to the Bolk way of work



# COMPANY PHILOSOPHY & MISSION

- Quality, Service en Reliability
- Not too big, not too small
- Healthy, stabil and independent
- A lot of involvement, bonding with employees
- Offer added value
- Stabil clients in different markets:  
for example Royal Grolsch,  
Heineken, SKF, Apollo Vredestein,  
GE Wind, Sarens, Enercon



# BOLK - MORE THAN NUMBERS

- 370 employees, from whom 200 drivers, 23 mechanics, 30 warehouse employees, the others are working at planning, management, bookkeeping, yard
- 180 trucks, 380 trailers
- Branches in Almelo en Hengelo, Oostenrijk, Duitsland, Frankrijk, Roemenië, Ierland en Zweden.





# EXCEPTIONAL TRANSPORT

- A lot of projectcargo:  
Silo's, crane parts, windmill components,



# ESCORT CARS AND PERMITS

- Eight Bolk escortcars
- Complex and non-uniform regulations in Europa
- Permits for own transports and for clients





# OPEN TRANSPORT

- Everything that is too wide, too long, too high
- (building)machines, rolling material, helicopters, constructionparts
- Throughout Europe, Italy is specialism





# COVERED TRANSPORTATION

- Beer (Grolsch), tiles, carparts, Christmastrees, Benelux, Germany, France, Italy



2017 HM Photofixes



# HORECADISTRIBUTIE

- Sligro (Heineken) East - Netherlands in Deventer
- Delivery to café's, restaurants etc.





# MACHINE MOVERS

- Company removals





# LOGISTIC SERVICES

- Planning national distribution Royal Grolsch
- Removal of Sarens, Felbermayr, Schmidbauer, etc cranes.
- Planning projects of windmills, silo's inclusiv shipping, transshipment and assembly.



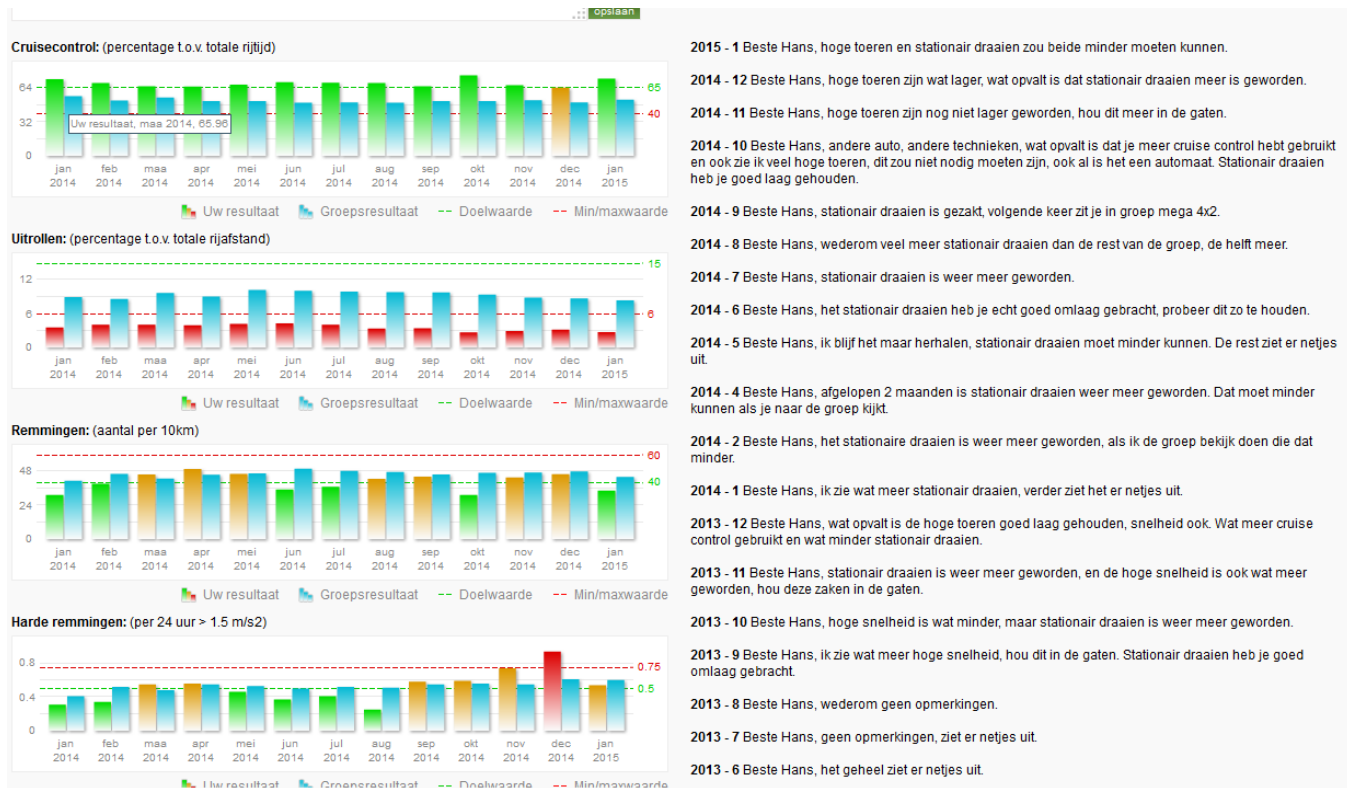
# BOLK LOGISTICS

- Combination of transport and logistic services
- Next to containerterminal 40.000 m<sup>2</sup>



# SAFE AND SOBER

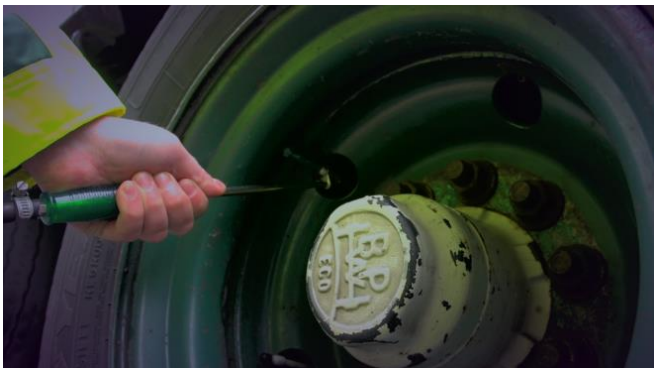
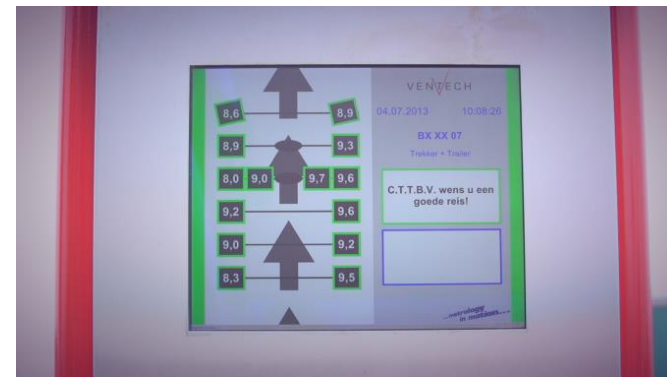
- Driving style analyses





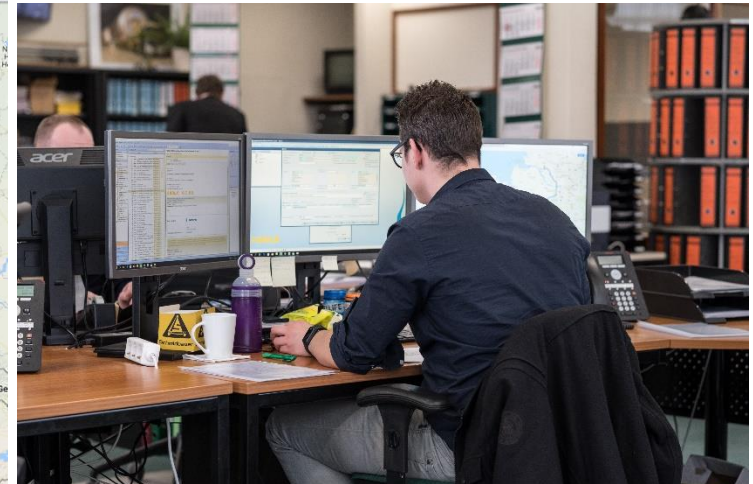
# SAFE AND SOBER

- Tyremeasurementsystem



# SAFE AND SOBER

- On-board computer
  - Location and communication
  - Driving times
  - Driving style
  - Diesel consumption



# SAFE AND SOBER

- Scanning height
- Alcohol driving lock





# SAFE AND SOBER

- Our experiences :
- Start in 2010
- Why?
- All vehicles



# Questions?



HM3photografics.  
Truckspotter N 36

