

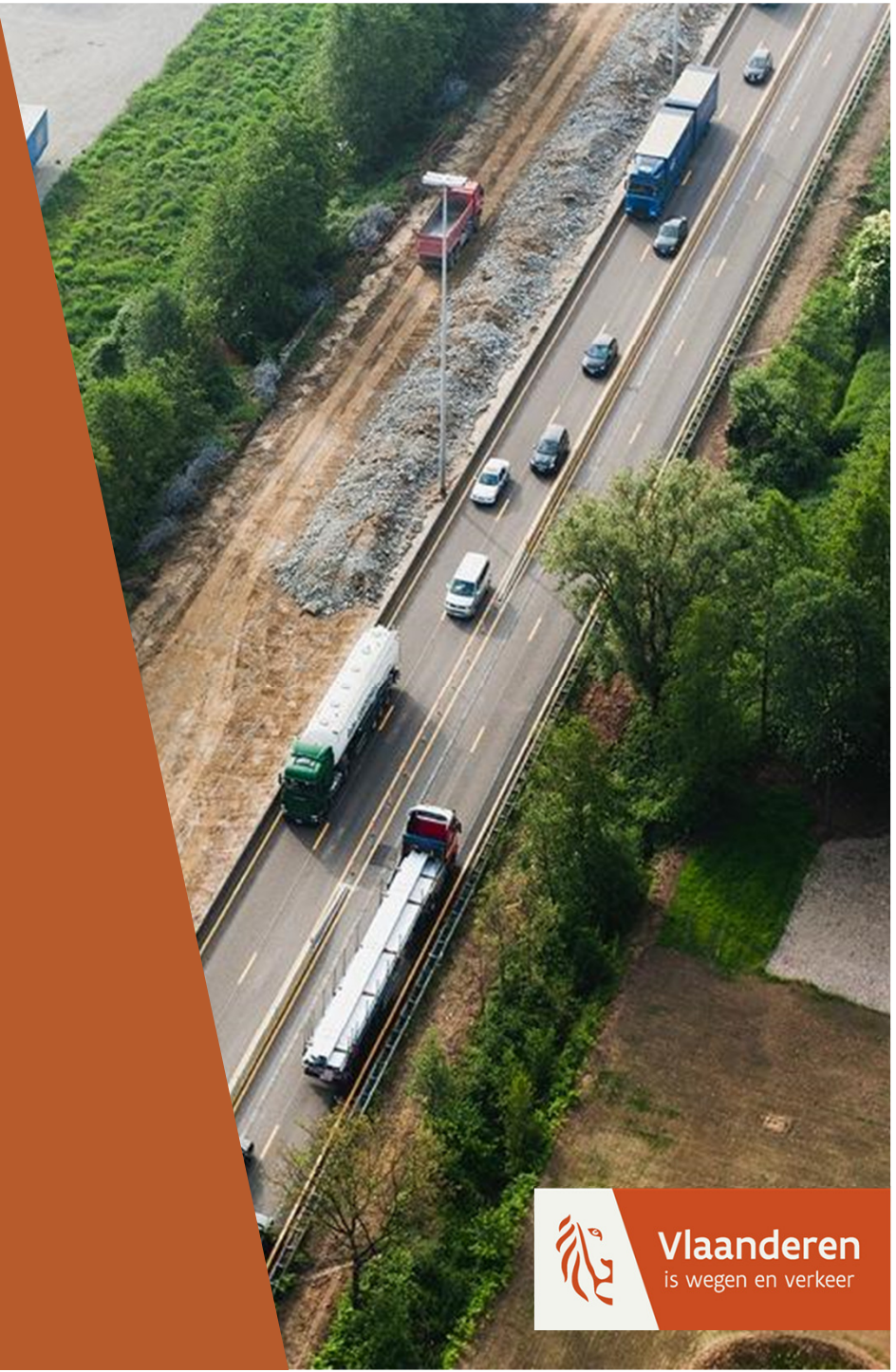
# TN-ITS implementation in Flanders

ITS Congress - 29/09/2017  
Bert Boterbergh



Vlaanderen  
is wegen en verkeer

# TN-ITS



**Vlaanderen**  
is wegen en verkeer

# TN-ITS - Vision & mission

TN-ITS project 2016-2017 ([www.tn-its.eu](http://www.tn-its.eu))

- Partners: ERTICO, France, UK, Finland, Ireland, Sweden, Norway, Flanders, TomTom, Here.
- Vision: “Bringing fresher map data to intelligent transport services”
- Mission: “Facilitate and foster the exchange of ITS-related spatial road data between road authorities as trusted data providers and data users as map makers and other parties.”

# TN-ITS - Vision & mission

## Focus:

- Static road attributes = the attributes are of a more or less permanent nature such as speed limits. The focus is in general on road attributes based on regulations, but may extend to other road and transport related features.
- Up-to-date = important role for the Road Authorities, who create the changes
- Common exchange format
- Data chain from road authorities to map makers

# TN-ITS Implementation in Flanders



Vlaanderen  
is wegen en verkeer



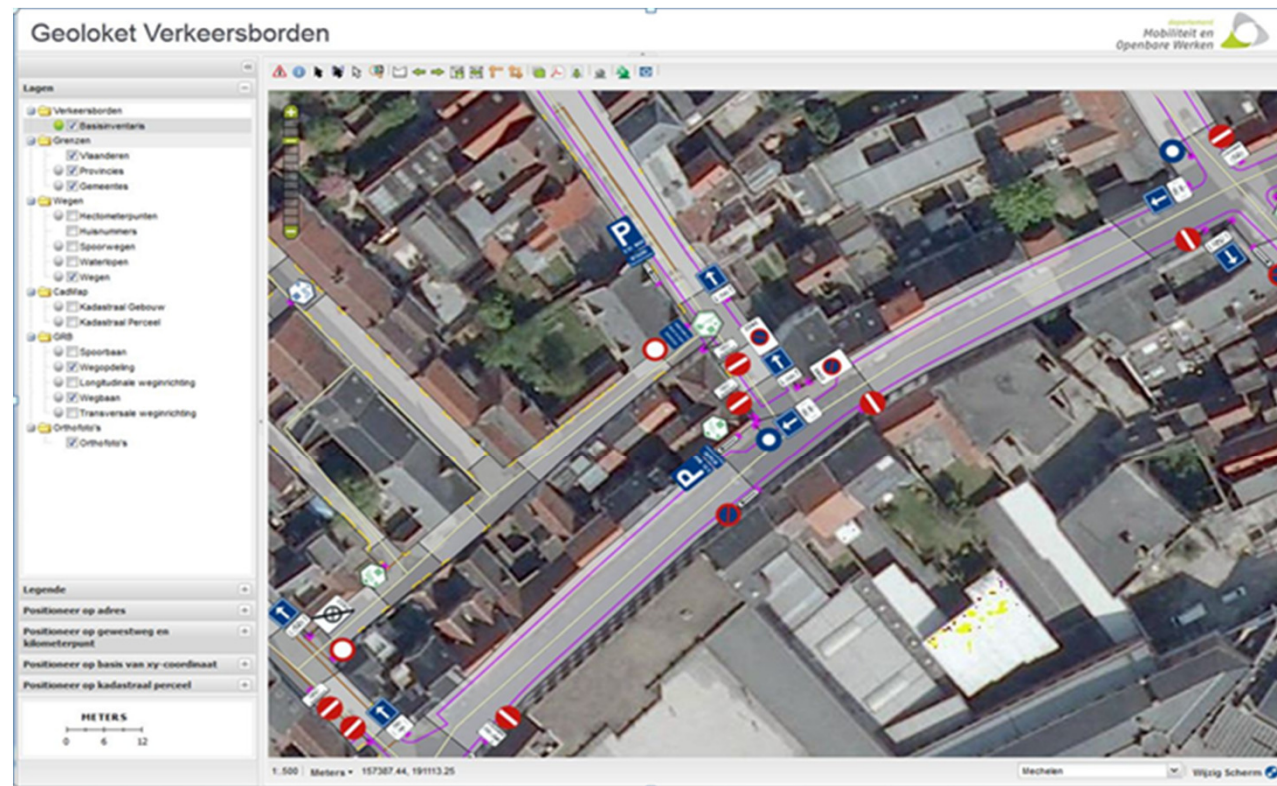
# Context

There are 2 traffic sign databases in Flanders:

- The traffic sign database containing all traffic signs along the highways, main roads and regional roads in Flanders (about 6500km)
  - Managed by the Agency Roads and Traffic (AWV) of the Flemish government.
- The traffic sign database containing all traffic signs along the other roads in Flanders, mainly local and secondary roads maintained by the cities and municipalities (about 54000km)

# Context

TN-ITS implementation is based upon the Traffic Sign Database of the Agency for Roads and Traffic in Flanders



# Context

The TN-ITS pilot of the Flanders region focused on:

- Exchanging speed limit signs and speed limit line segments that are located along the highways and the regional roads of the wegenreger
- “wegreger” = road database of Flanders, published as free open data (june 2016)
- Using OpenLR and GML
- No INSPIRE locations yet available in “Wegreger”



# Implementation in Flanders

## Speed limit traffic signs

- First public TN-ITS webservice available: 29/09/2016
  - StartOfSpeedLimit, the EndOfSpeedLimit, the StartOfBuiltUpArea and the EndOfBuiltUpArea (point features, traffic signs)
  - Daily updates

## Feedback TomTom & Here

- Many speed limit traffic signs are located along municipal roads, though managed by the Flemish region
- Causes confusion with map providers, because location information did not have the road segment it belongs to associated with it

# Implementation in Flanders

## Speed limit line segments

- Speed limits as line features published on 30/12/2016
  - Automatically generated using the traffic sign database and 'Wegenregister'

## Feedback TomTom & Here

- line features are more valuable data than the speed limit traffic signs
- more frequent updates on this data would be meaningful (daily instead of once every two weeks)
- problems due to the directionality in the road network data.

# Implementation in Flanders

## From traffic sign (point) to speed limit (line)

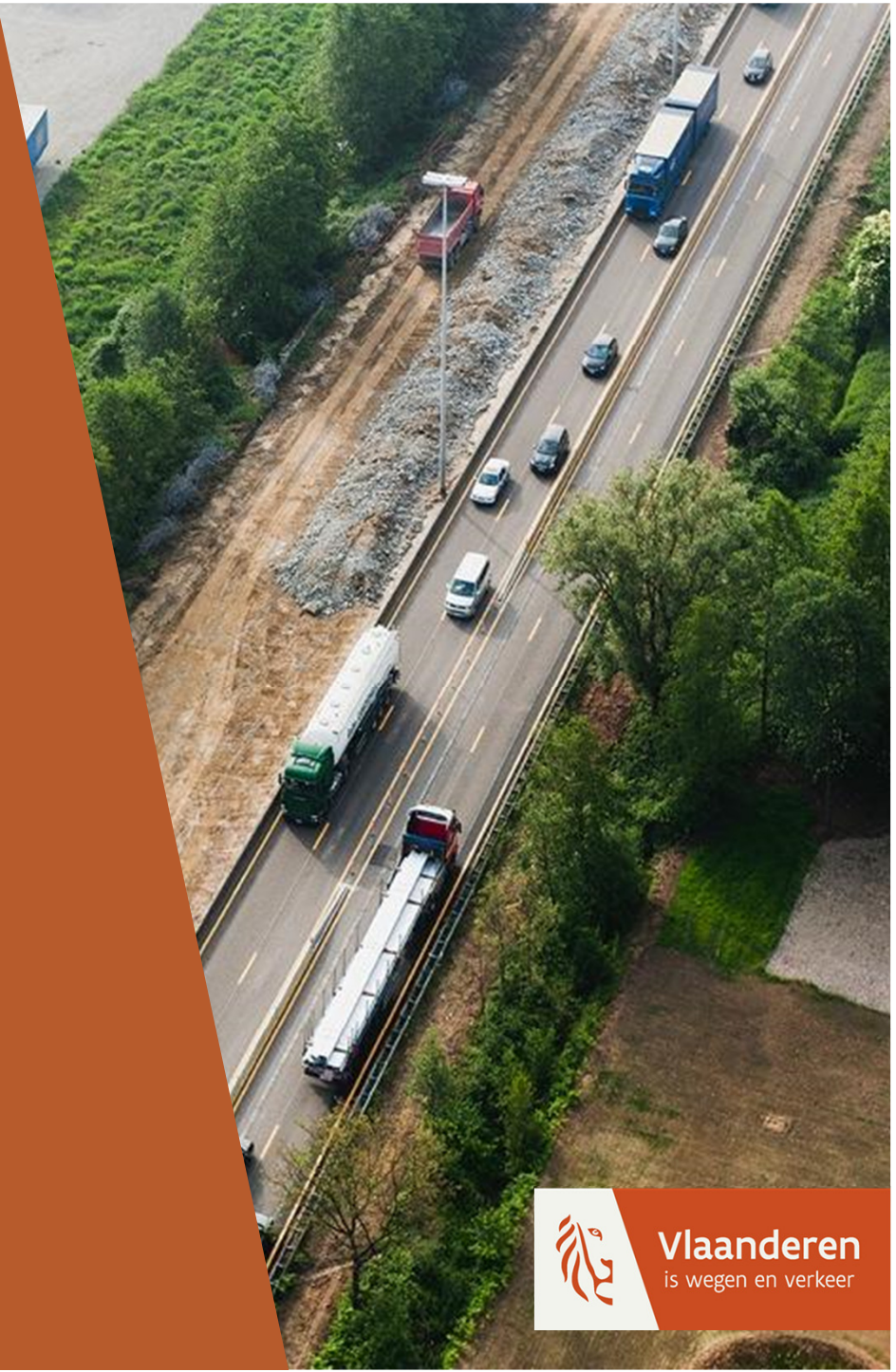
1. Project traffic signs indicating speed limits (incl. Built up areas, zone) on Wegenregister
  2. Speed limit is generated using:
    - a. Implicite speed limits
    - b. Form of way
    - c. Traffic signs
- Result = automatically generated map with the speed limits
  - Quality = depends on quality of the traffic sign database, Wegenregister and the algorithm.



# TN-ITS GO



Vlaanderen  
is wegen en verkeer



# TN-ITS GO

## TN-ITS GO 2018 - 2021

- Implement pilot TN-ITS services in each of the nine new Member States (Greece, The Netherlands, Lithuania, Hungary, Cyprus, Portugal, Slovenia,...)
- Implement extension of the existing TN-ITS services in six Member States (depending on the operational readiness of the TN-ITS service of the MS)
- Evaluation of the TN-ITS services including the integration of the data in commercial database as well as the feedback loop
- Maintain an active TN-ITS expert community

# Thank you!

Bert Boterbergh

Agency for Roads and Traffic

[bert.boterbergh@mow.vlaanderen.be](mailto:bert.boterbergh@mow.vlaanderen.be)



Vlaanderen  
is wegen en verkeer

